

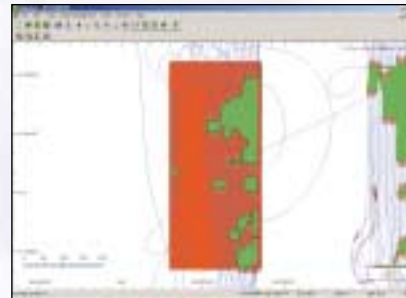
# MapStar

## Selected Features

- Pre-plan spray jobs
- Create or edit waypoints, field boundaries, and patterns
- View area sprayed, chemical amounts applied, and latitude and longitude positions
- Measure distance and area
- Import Shape, DXF, and MID/MIF file formats
- Convert GIS files to Satloc job files
- Export Satloc logs to Shape, DXF, MID/MIF, or ASCII file formats
- View and print log files on job or in office
- Create flow rate prescription maps from Shape files
- Replay logged data for in-depth analysis



MapStar is a pre-application mapping and post-application log replay software. MapStar allows you to import/export common GIS file formats, such as CAD DXF, MapInfo MID/MIF, and ESRI Shape files. In addition, you can view, analyze, and export Satloc log data. MapStar's newest feature includes support for variable rate applications and prescription maps.



## Specifications

### System Requirements

Pentium 100 MHz+ CPU  
Windows compatible mouse or other pointing device  
54 MB+ hard disk space  
64 MB+ RAM  
VGA, SVGA, or better video card displaying 24-bit color at 800 x 600 screen resolution  
Parallel port (for hardware key)  
PCMCIA Card reader to read Satloc log cards  
Inkjet or other graphics-capable printer

### Files Supported

**Viewable Data Files**  
Satloc LOG  
Satloc SWA  
Satloc VRC

### Map Underlay Files

*Import*  
Satloc BMF  
Satloc JOB  
\*Satloc PMH  
\*ESRI SHP  
CAD DXF  
MapInfo MID/MIF

*Export*  
Satloc JOB  
CAD DXF  
MapInfo MID/MIF  
ASCII

\*MapStar will generate a prescription map file (PMH) from an ESRI SHP file to drive variable rate flow control